



Society





Society

This sustainable bouclé textile has a luxurious look & feel. Our product development team created this fabric together with a weaver who is known for his unique recycled polypropylene.

This textile is made from 100% recycled polypropylene, a special type of polypropylene, coming from leftovers from diapers and masks. Society is multicoloured, soft with a rough and modern look.

Society fits all types of upholstery, so it can be applied widely, as loose covers as well as on tight-fitted furniture.

It is voluminous and has a comfortable handfeel. Society can be machine-washed at 30 degrees Celsius* without losing its characteristics.

- We recommend to wash the cover inside out and immediately place the cover back to the piece of furniture slightly damp after washing.

Fabraa Upholstery fabrics with a conscience. We make sustainable choices easy by offering a wide range of high-quality, affordable upholstery fabrics with consideration for the conditions throughout the supply chain.

Composition

/ faceside 100%RPP
/ backside n/a
/ flatweave

Suitable for

sofa's, beds, chairs with fitted and loose fitting upholstery



cinnamon 94



cream 02



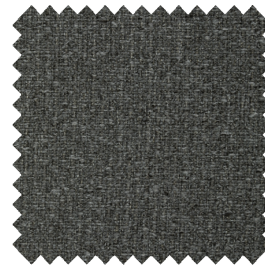
denim 153



espresso 123



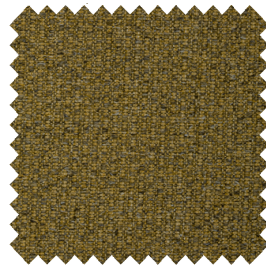
graphite 66



grey 65



liver 10



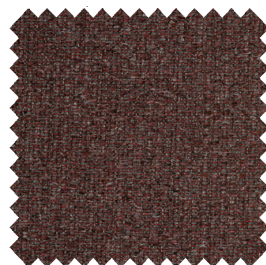
mustard 06



natural 01



petrol 56



scarlet 141

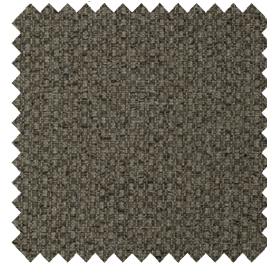


shitake 124

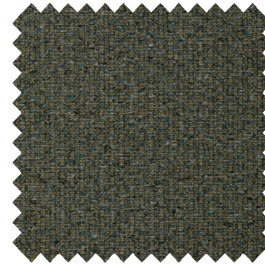
Please note: colours may vary according to your screen settings.



steel 149



taupe 12



teal 198



turtle 88



wood 108

Please note: colours may vary according to your screen settings.

Society - Article passport

A sustainable boucle textile with a luxurious look & feel.

Available from stock in a wide range of contemporary and commercial colours.

Product characteristics

Productgroup	flatweave
Applications	sofa's, beds, chairs with fitted and loose fitting upholstery
Composition faceside	100%RPP
Composition backside	n/a
Bonding / Coating	n/a
Statistic code	54077300
Dyeing method	yarn dyed
Available colours	17
Packaging	transparent plastic

Durability specifications

Test	Test specification	Executed by laboratory:	Unit	Testresult		Norm RAL GZ 430/4:2019-01		Norm DIN EN 14 465:2006-09
				Dry	Wet	DGM	DGM+	
Abrasion resistance - yarn breakage	DIN EN ISO 12947-1:2007-04, DIN EN ISO 12947-2:2017-03	CTL	cycles	45.000		min. 12.000	min. 16.000	A
Pilling	DIN EN ISO 12945-2:2000-11. 2000 cycles	CTL	grade	4		min. 3-4	min. 4	B
Colour fastness to light	DIN EN ISO 105-BO2:2014-11. Process 3, exposure level 5							
	light colours	CTL	grade	5		min. 4	min.5	B
	middle colours	CTL	grade	5		min. 4	min.5	B
Colour fastness to rubbing	DIN EN ISO 105-X12:2016-11							
	light colours	CTL	grade	5	5	dry: 4, wet: 3	dry: > 4, wet: 3-4	A/A
	middle colours	CTL	grade	5	5	dry: 4, wet: 3	dry: > 4, wet: 3-4	A/A
dark colours	CTL	grade	4-5	4-5	dry: 4, wet: 3	dry: > 4, wet: 3-4	A/A	
	Ignitability (cigarette test)	BS 5852 part 1 (1979) from The Furniture and Furnishing (Fire) (Safety) regulations: 1988 No. 1324. Schedule 4 part 1 Ignition source 0: cigarette	CTL	passed				



Processing specifications

Minimum workable width in centimeters	± 138							
Roll length in meters	± 40							
Material weight in grams per linear meter	± 588							
Test	Test specification	Executed by laboratory:	Unit	Testresult		Norm RAL GZ 430/4:2019-01		Norm DIN EN 14 465:2006-09
				Warp	Weft	DGM	DGM+	
Tensile strength	DIN EN ISO 13934-1:2013-08	CTL	Newton	903	1.375	min. 350	min. 400	A/A
Tear growth resistance	DIN EN ISO 13937-3:2000-06	CTL	Newton	148,0	140,4	min. 25	min. 30	A/A
Resistance to seam slippage	DIN EN ISO 13936-2:2004-07. Load 180 N	CTL	mm	2,2	2,2	max. 5	max. 4	A/A
Delamination	DIN 53530:1981-02	CTL	Newton	n/a	n/a	n/a	n/a	n/a
Chemical substances	REACH	Centexbel		passed				
	Oeko-Tex, product class II	Centexbel		certified				

Cleaning specifications

Test	Test specification	Executed by laboratory:	Unit	Testresult		Norm RAL GZ 430/4:2019-01		Norm DIN EN 14 465:2006-09
				Warp	Weft	DGM	DGM+	
Dimensional change for washing 30 degrees celcius / air drying	DIN EN ISO 5077:2008-04, DIN EN ISO 6330:2013-02, DIN EN ISO 3759:2011-08	CTL	%	0,0	0,0	n/a	n/a	A/A

- We recommend to wash the cover inside out and immediately place the cover back to the piece of furniture slightly damp after washing.



FABRAA[®]
fabrics with a conscience

Textafoam b.v.

La Défense 11 | 5026 SC Tilburg

P.O. Box 12 | 5050 AA Goirle

The Netherlands

T +31(0)13 534 5934

F +31(0)13 534 7586

E info@textafoam.nl

www.textafoam.nl