



Europe



OEKO-TEX®
CONFIDENCE IN TEXTILES



FABRAA®
fabrics with a conscience



Europe

Incredibly soft, durable and also very sustainable... meet Europe! This chenille quality is woven on a jacquard loom. The warp exists completely from recycled polyester and for the weft we used (virgin) polyester and recycled cotton yarns.

Europe is roughly woven and has an extreme multicoloured aspect. This upholstery fabric is suitable for every type of upholstery and due to the chenille yarns it is voluminous and extremely soft.

Our product development team designed this luxurious textile together with an European partner who is specialized in producing sustainable fabrics. We had the ambition to create a fabric that will make the furniture immediately a real eyecatcher, the result is Europe and we hope you like it.

Europe is yarn dyed and machine-washable at 30 degrees Celsius*. Available from stock in a wide, deep and trendy colour line.

- We recommend to wash the cover inside out and immediately place the cover back to the piece of furniture, slightly damp, after washing.

Fabreea Upholstery fabrics with a conscience. We make sustainable choices easy by offering a wide range of high-quality, affordable upholstery fabrics with consideration for the conditions throughout the supply chain.

Composition

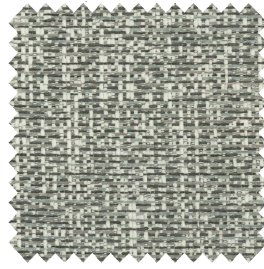
/ faceside 50%RPET 34%PES 16%RCO
/ backside n/a
/ chenille jacquard

Suitable for

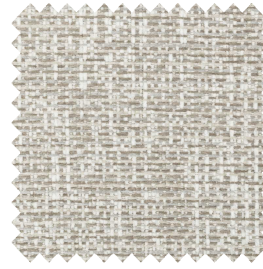
sofa's, beds, chairs with fitted and loose fitting upholstery



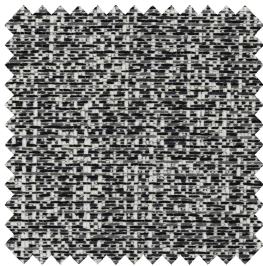
ashgrey 40



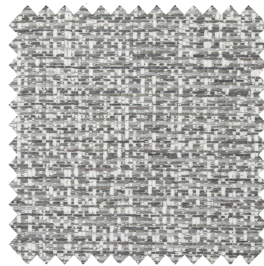
azure 144



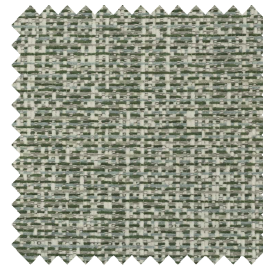
beige 05



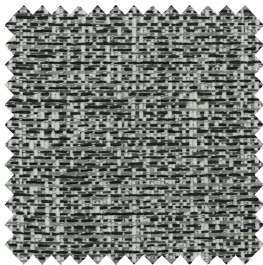
charcoal 79



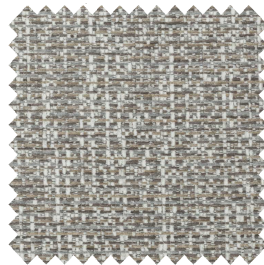
clay 84



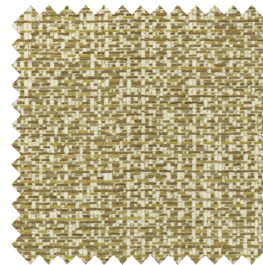
forest 162



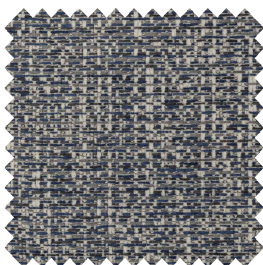
grey 65



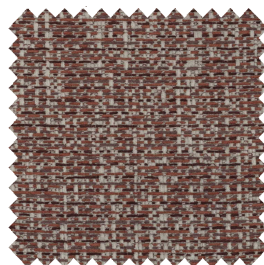
liver 10



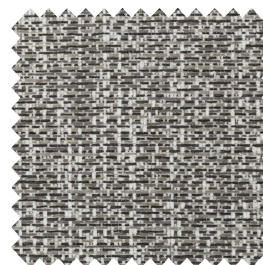
mustard 06



navy 49



scarlet 141



taupe 12

Please note: colours may vary according to your screen settings.

Europe - Article passport

Soft, durable and sustainable fabric with a multi coloured aspect.

Available from stock in a wide range of contemporary and commercial colours.

Product characteristics

Productgroup	chenille jacquard
Applications	sofa's, beds, chairs with fitted and loose fitting upholstery
Composition faceside	50%RPET 34%PES 16%RCO
Composition backside	n/a
Coating	transparent
Statistic code	58013600
Dyeing method	yarn dyed
Available colours	12
Packaging	transparent plastic

Durability specifications

Test	Test specification	Executed by laboratory:	Unit	Testresult		Norm RAL GZ 430/4:2019-01		Norm DIN EN 14 465:2006-09
				Dry	Wet	DGM	DGM+	
Abrasion resistance - yarn breakage	DIN EN ISO 12947-1:2007-04, DIN EN ISO 12947-2:2017-03	CTL	cycles	50.000		min. 8.000	min. 16.000	A
Pilling	DIN EN ISO 12945-2:2000-11. 2000 cycles	CTL	grade	4-5		min. 3-4	min. 4	A
Colour fastness to light	DIN EN ISO 105-BO2:2014-11. Process 3, exposure level 5							
	light colours	CTL	grade	5		min. 4	min.5	B
	middle colours	CTL	grade	5		min. 4	min.5	B
Colour fastness to rubbing	DIN EN ISO 105-X12:2016-11							
	light colours	CTL	grade	4-5	4-5	dry: 4, wet: 3	dry: > 4, wet: 3-4	A/A
	middle colours	CTL	grade	4-5	4-5	dry: 4, wet: 3	dry: > 4, wet: 3-4	A/A
dark colours	CTL	grade	4	4	dry: 4, wet: 3	dry: > 4, wet: 3-4	B/A	
	ignitability (cigarette test)	BS 5852 part 1 (1979) from The Furniture and Furnishing (Fire) (Safety) regulations: 1988 No. 1324. Schedule 4 part 1 Ignition source 0: cigarette	CTL	passed				

Processing specifications

Minimum workable width in centimeters	± 138
Roll length in meters	± 40
Material weight in grams per linear meter	± 560

Test	Test specification	Executed by laboratory:	Unit	Testresult		Norm RAL GZ 430/4:2019-01		Norm DIN EN 14 465:2006-09
				Warp	Weft	DGM	DGM+	
Tensile strength	DIN EN ISO 13934-1:2013-08	CTL	Newton	864	385	min. 350	min. 400	A/C
Tear growth resistance	DIN EN ISO 13937-3:2000-06	CTL	Newton	62,0	46,0	min. 25	min. 30	A/A
Resistance to seam slippage	DIN EN ISO 13936-2:2004-07. Load 180 N	CTL	mm	5,2	3,8	max. 5	max. 4	B/A
Delamination	DIN 53530:1981-02	CTL	Newton	n/a	n/a	n/a	n/a	n/a
Chemical substances	REACH	Centexbel		passed				
	Oeko-Tex, product class II	Centexbel		certified				

Cleaning specifications

Test	Test specification	Executed by laboratory:	Unit	Testresult		Norm RAL GZ 430/4:2019-01		Norm DIN EN 14 465:2006-09
				Warp	Weft	DGM	DGM+	
Dimensional change for washing 30 degrees celcius / air drying	DIN EN ISO 5077:2008-04, DIN EN ISO 6330:2013-02, DIN EN ISO 3759:2011-08	CTL	%	3,0	3,0	n/a	n/a	B/B



- We recommend to wash the cover inside out and immediately place the cover back to the piece of furniture, slightly damp, after washing.



FABRAA[®]
fabrics with a conscience

Textafoam b.v.

La Défense 11 | 5026 SC Tilburg

P.O. Box 12 | 5050 AA Goirle

The Netherlands

T +31(0)13 534 5934

F +31(0)13 534 7586

E info@fabraa.com

www.fabraa.com

apr 2022